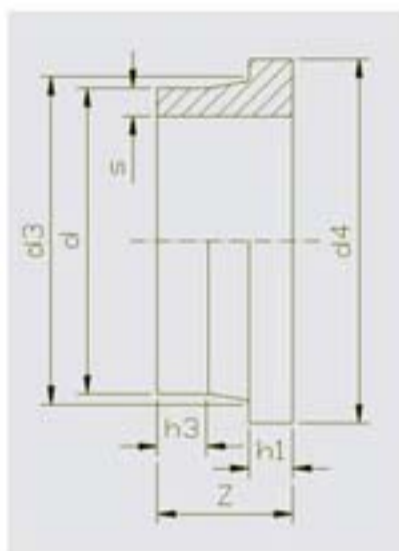


HDPE Adapter flansni

Materijal: PE-HD(PE 100)
 Boja: plava ili crna
 Dimenzije: DIN 16963/4
 Namena: za čeono zavarivanje

HDPE Stub ends (wending collars)

Material: PE-HD(PE 100)
 Color: blue or black
 Dimension: DIN 16963/4
 Execution: for but welding



SDR 6 - PN 32

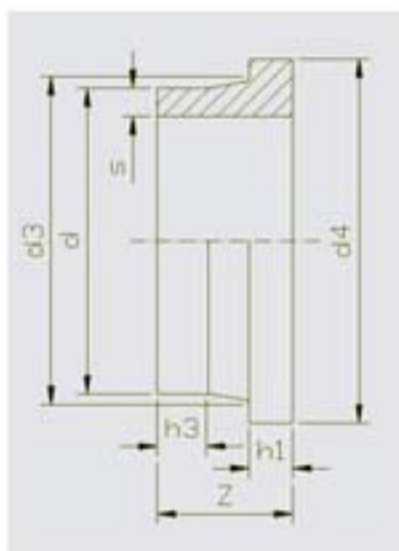
SDR 6						
d	s	d3	d4	Z	h1	h3
50	8.3	61	88	100	20	60
63	10.5	75	102	100	22	60
75	12.5	89	122	100	24	60
90	15.0	105	138	110	26	60
110	18.3	125	158	110	28	60
125	20.8	132	158	110	40	60
140	23.2	155	188	110	40	60
160	26.6	175	212	110	40	60
180	29.9	180	212	110	45	60
200	33.2	232	268	110	50	60
225	37.4	235	268	120	50	60
250	41.5	285	320	120	58	60
280	46.5	290	320	120	58	60
315	52.3	335	370	120	65	60

HDPE Adapter flansni

Materijal: PE-HD(PE 100)
 Boja: plava ili crna
 Dimenzije: DIN 16963/4
 Namena: za čeono zavarivanje

HDPE Stub ends (wending collars)

Material: PE-HD(PE 100)
 Color: blue or black
 Dimension: DIN 16963/4
 Execution: for but welding



SDR 7.4 - PN 25

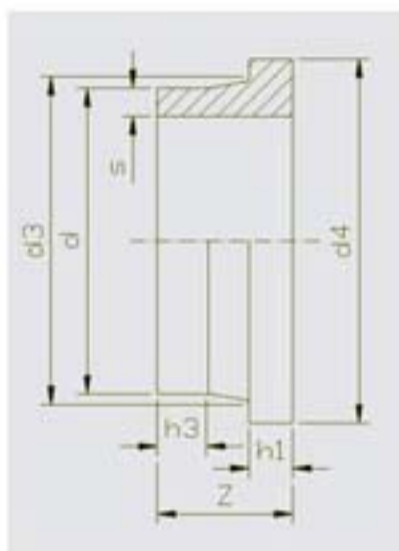
SDR 7.4						
d	s	d3	d4	Z	h1	h3
50	6.9	61	88	100	15	60
63	8.6	75	102	100	17	60
75	10.3	89	122	100	19	60
90	12.3	105	138	110	20	60
110	15.1	125	158	110	22	60
125	17.1	132	158	110	30	60
140	19.2	155	188	110	30	60
160	21.9	175	212	110	30	60
180	24.6	180	212	110	35	60
200	27.4	232	268	110	40	60
225	30.8	235	268	120	40	60
250	34.0	285	320	120	45	60
280	38.3	290	320	120	45	60
315	43.1	335	370	120	50	60
355	48.5	371	430	120	55	60
400	54.7	425	482	120	60	60
450	61.5	514	585	120	75	60

HDPE Adapter flansni

Materijal: PE-HD(PE 100)
 Boja: plava ili crna
 Dimenzije: DIN 16963/4
 Namena: za čeono zavarivanje

HDPE Stub ends (wending collars)

Material: PE-HD(PE 100)
 Color: blue or black
 Dimension: DIN 16963/4
 Execution: for but welding



SDR 9 - PN 20

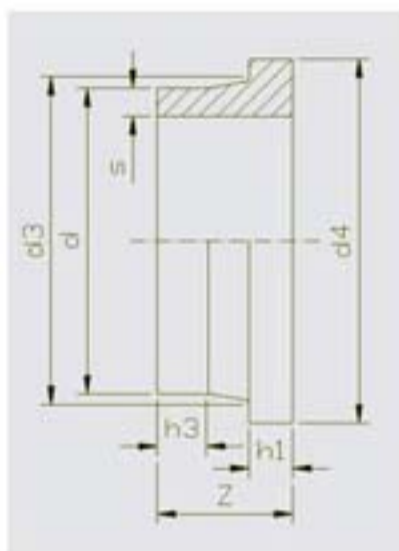
SDR 9						
d	s	d3	d4	Z	h1	h3
50	5.6	61	88	100	12	60
63	7.1	75	102	100	14	60
75	8.4	89	122	100	16	60
90	10.1	105	138	110	19	60
110	12.3	125	158	110	20	60
125	14.0	132	158	110	27	60
140	15.7	155	188	110	27	60
160	17.9	175	212	110	27	60
180	20.1	180	212	110	33	60
200	22.4	232	268	110	36	60
225	25.2	235	268	120	36	60
250	27.9	285	320	120	40	60
280	31.3	290	320	120	40	60
315	35.2	335	370	120	40	60
355	39.7	371	430	120	48	60
400	44.7	425	482	120	53	60
450	50.3	514	585	120	75	60
500	55.8	530	585	120	75	60

HDPE Adapter flansni

Materijal: PE-HD(PE 100)
 Boja: plava ili crna
 Dimenzije: DIN 16963/4
 Namena: za čeono zavarivanje

HDPE Stub ends (wending collars)

Material: PE-HD(PE 100)
 Color: blue or black
 Dimension: DIN 16963/4
 Execution: for but welding



SDR 11 - PN 16

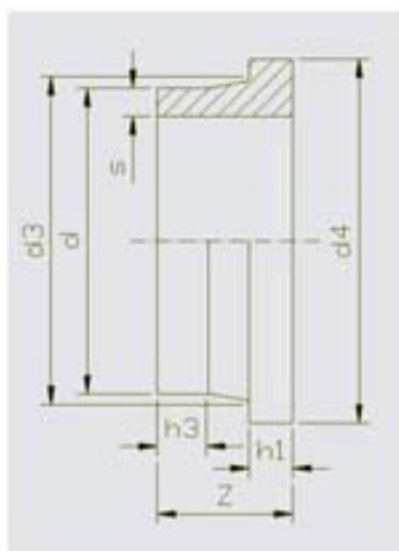
SDR 11						
d	s	d3	d4	Z	h1	h3
50	4.6	61	88	100	12	60
63	5.8	75	102	100	14	60
75	6.8	89	122	100	16	60
90	8.2	105	138	110	17	60
110	10.0	125	158	110	18	60
125	11.4	132	158	110	25	60
140	12.7	155	188	110	25	60
160	14.6	175	212	110	25	60
180	16.4	180	212	110	30	60
200	18.2	232	268	110	32	60
225	20.5	235	268	120	32	60
250	22.7	285	320	120	35	60
280	25.4	290	320	120	35	60
315	28.6	335	370	120	35	60
355	32.2	371	430	120	40	60
400	36.6	425	482	120	46	60
450	40.9	514	585	120	60	60
500	54.4	530	585	120	60	60
560	50.8	615	685	120	60	60
630	57.2	642	685	120	60	60

HDPE Adapter flansni

Materijal: PE-HD(PE 100)
 Boja: plava ili crna
 Dimenzije: DIN 16963/4
 Namena: za čeono zavarivanje

HDPE Stub ends (wending collars)

Material: PE-HD(PE 100)
 Color: blue or black
 Dimension: DIN 16963/4
 Execution: for but welding



SDR 17 - PN 10

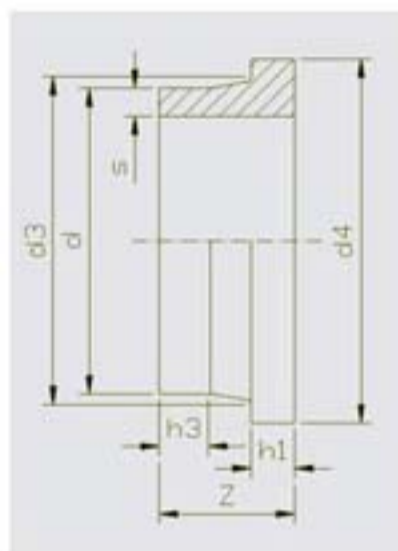
SDR 17						
d	s	d3	d4	Z	h1	h3
50	3.0	61	88	100	12	60
63	3.8	75	102	100	14	60
75	4.5	89	122	100	16	60
90	5.4	105	138	110	17	60
110	6.6	125	158	110	18	60
125	7.4	132	158	110	18	60
140	8.3	155	188	110	18	60
160	9.5	175	212	110	18	60
180	10.7	180	212	110	20	60
200	11.9	232	268	110	24	60
225	13.4	235	268	120	24	60
250	14.8	285	320	120	25	60
280	16.6	290	320	120	25	60
315	18.7	335	370	120	25	60
355	21.1	371	430	120	30	60
400	23.7	425	482	120	33	60
450	26.7	514	585	120	46	60
500	29.7	530	585	120	46	60
560	33.2	615	685	120	50	60
630	37.4	642	685	120	50	60

HDPE Adapter flansni

Materijal: PE-HD(PE 100)
 Boja: plava ili crna
 Dimenzije: DIN 16963/4
 Namena: za čeono zavarivanje

HDPE Stub ends (wending collars)

Material: PE-HD(PE 100)
 Color: blue or black
 Dimension: DIN 16963/4
 Execution: for but welding



SDR 26 - PN 6

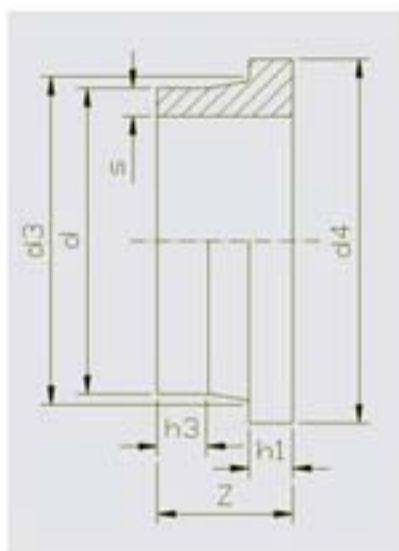
SDR 26						
d	s	d3	d4	Z	h1	h3
50	2.0	61	88	100	12	60
63	2.5	75	102	100	14	60
75	2.9	89	122	100	16	60
90	3.5	105	138	110	17	60
110	4.2	125	158	110	18	60
125	4.8	132	158	110	18	60
140	5.4	155	188	110	18	60
160	6.2	175	212	110	18	60
180	6.9	180	212	110	18	60
200	7.7	232	268	110	18	60
225	8.6	235	268	110	18	60
250	9.6	285	320	120	20	60
280	10.7	290	320	120	20	60
315	12.1	335	370	120	20	60
355	13.6	371	430	120	23	60
400	15.3	425	482	120	26	60
450	17.2	514	585	120	38	60
500	19.1	530	585	120	38	60
560	21.4	615	685	120	40	60
630	24.1	642	685	120	40	40

HDPE Adapter flansni

Materijal: PE-HD(PE 100)
 Boja: plava ili crna
 Dimenzije: DIN 16963/4
 Namena: za čeono zavarivanje

HDPE Stub ends (wending collars)

Material: PE-HD(PE 100)
 Color: blue or black
 Dimension: DIN 16963/4
 Execution: for but welding



SDR 41 - PN 4

SDR 41						
d	s	d3	d4	Z	h1	h3
90	2.2	105	138	110	17	60
110	2.7	125	158	110	18	60
125	3.1	132	158	110	18	60
140	3.5	155	188	110	18	60
160	4.0	175	212	110	18	60
180	4.4	180	212	110	18	60
200	4.9	232	268	110	18	60
225	5.5	235	268	120	18	60
250	6.2	285	320	120	20	60
280	6.9	290	320	120	20	60
315	7.7	335	370	120	20	60
355	8.7	371	430	120	23	60
400	9.8	425	482	120	26	60
450	11.0	514	585	120	33	60
500	12.3	530	585	120	33	60
560	13.7	615	685	120	35	60
630	15.4	642	685	120	35	60